

# JKSOFT RPBee nRF52 Module

## Specifications:

nRF52 SoC from Nordic SemiConductor  
32-bit ARM® Cortex™-M4F CPU running at 64MHz  
512kB + 64kB RAM  
Bluetooth Low Energy compatible 2.4GHz radio  
FCC / IC / TELEC certified module  
Up to +4dBm output power  
1.7v to 3.3v operation with internal linear and DC/DC voltage regulators  
Two programmable LED's  
XBee™ formfactor (Digi International, Minnetonka, Minnesota, United States)  
Power/uart/gnd pin compatible with 2mm male pins  
OTA (Over the AIR) Updates possible  
Can be programmed as an [iBeacon™](#) (Apple Inc. Cupertino, CA, USA)

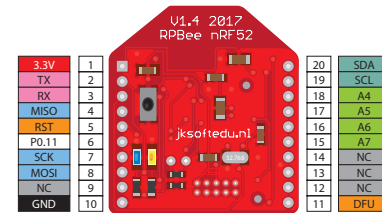
The embedded 2.4GHz transceiver supports Bluetooth low energy, ANT and proprietary 2.4 GHz protocol stack. It is on air compatible with the nRF51 Series, nRF24L and nRF24AP Series products from Nordic Semiconductor. The module is Bluetooth 5 ready! Details available in the [nRF52832](#) (Nordic SemiConductor) product specification.

DFU Reset button for easy (re)programming  
Programming directly from [Arduino™ IDE](#) (Note: needs a XBee - USB UART Module)  
Example programming codes available.  
SWD connector for debugging (for [J-Link Segger](#))  
NFC Tag connector to emulate a NFC tag.

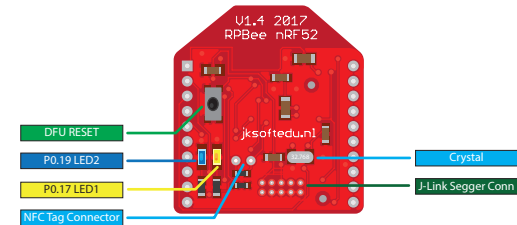
For more information: <http://jksoftedu.nl/hardware/nrf52/> or scan:



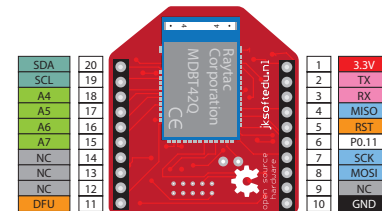
Top



Extra functions



Bottom



**JKSOFT Educational**  
Enhancing Education through Innovation

